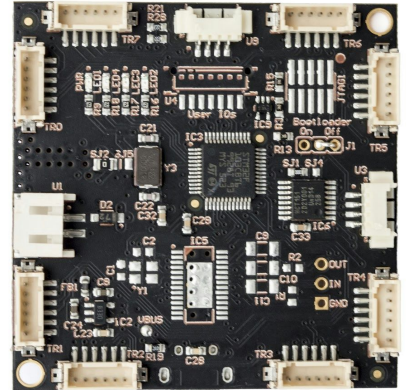


TeraRanger Hub

by TERABEE 

The modular, plug n' play solution for multiple distance sensors

The TeraRanger Hub allows you to connect up to 8 TeraRanger sensors and obtain rapid distance values from each sensor. The data is streamed out from a USB or UART port as an array of calibrated distances in millimetres. It is the perfect tool for multi-directional robotics perception, while its low power consumption and small size make it ideal for embedded applications. If you need more than 8 sensors, simply stack more hubs!



Technical Specifications:

Protection and mounting:	Use with or without the included case. 2 mounting holes for M2.5 screws.
Size:	L 56 x W 56 x H 14mm (with case) L 50 x W 50 x H 8mm (without case)
Weight:	15g without the case, 25g with the case
Supply voltage:	12V DC Recommended (10-20V accepted)
Supply current:	25mA (plus the consumption of each connected TeraRanger sensor) @12V in general environment
Possible interfaces:	Eight ports to connect TeraRanger One sensors
	UART, +3.3V level, 921600,8,N,1 connector: 4 pin Molex Picoblade
	USB 2.0 (through a Micro-USB port)
Expansion:	Can bus +5V level connector: 4 pin Molex Picoblade (firmware under development, please contact us if you are interested in this)

A free graphical user interface is available for download. It provides a clear readout of the distance values being obtained by each TeraRanger sensor and allows you to set certain sensor parameters.

In the box:

- Hub with optional plastic case
- power cable with open ends (10cm long)
- one cable to connect TeraRanger One to TeraRanger Hub (22cm long)
- micro USB cable (50cm long)

TeraRanger Hub, sensors and additional cables can be purchased from our online store at:

www.teraranger.com

TERABEE
Technoparc
90, Rue Henri Fabre
St. Genis-Pouilly 01630
France

Website: www.teraranger.com

Commercial enquiries: teraranger@terabee.com
Technical support: support@teraranger.com

